

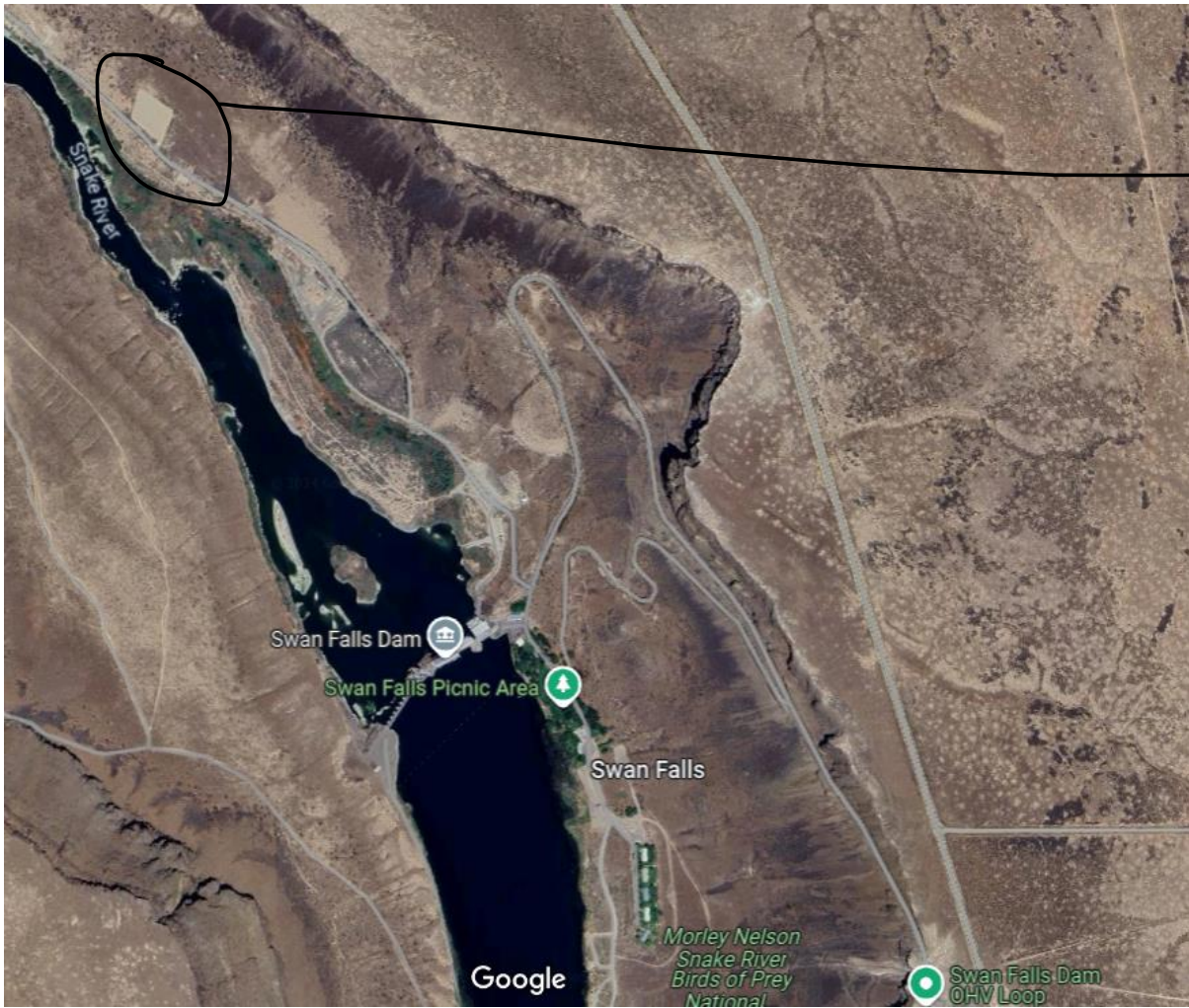
Trail Head: Designated horse parking trailhead downstream from the Swan Falls Dam. Access by gravel road.

Directions: From Kuna ID - Drive Swan Falls Road south ~20 miles to the Dam. Go down river from the dam to parking area ~3/4 mile.

Facilities: Gravel parking area that is fenced. It has horse gates to exit the back corner of the parking area. The area is open 7 am to ~4 pm daily.

Idaho power asks that you do not clean out your trailers in the gravel lot. Please pick up your horse manure.

Trails: Game trails through the cheat grass and sage brush, downstream from the dam as well as gravel road along river. You can go clear to Halverson Lake along the river.



circled area is a fenced horse trailer parking gravel area